

## ALUMINIUM LIFT - OFF HINGE

### Code No. A 103 **Universal** Lift - Off

#### APPLICATION

- Lift-off facility for aluminium and timber doors.

#### SPECIFICATION

- **Alloy:** High strength T.6 minimum tensile 254 mpa.
- **Pin Dia:** 4.7mm 304 stainless steel with machined chamfers.
- **Bushes:** Flanged nylon.
- **Knuckle:** Round.
- **Aluminium Endcaps:** Pressed-in interference fit.
- **Pin Length:** 15mm.
- **Maximum Weight Capacity:** 25 kg (turn over for further information)

#### INSTALLATION GUIDE ONLY

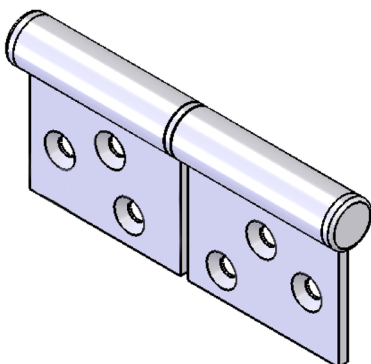
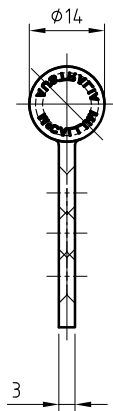
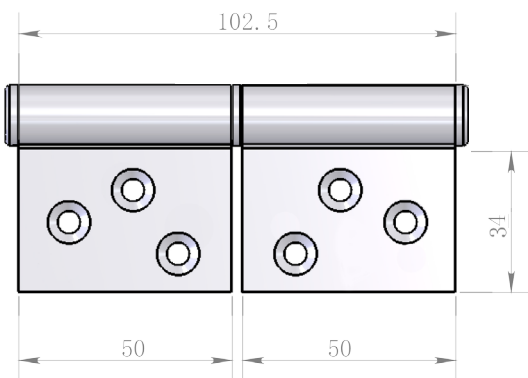
- **These hinges are designed to suit left and right hand installations making it easier for specifying.**
- The leaves are central on the knuckle with double countersinking.
- Two of the screw holes in the leaf align with metal frame pattern. The third hole will require drilling and tapping of the frame.
- 3 x 12mm x M5 metal screws are supplied for the metal frame.
- When using a door closer, we recommend a minimum of 3 hinges be used, with the top hinge located as high as possible. For excessive usage, a fourth hinge may be required.
- Standard Door: 2040 (h) x 820 (W)
- For lift-off clearance, we recommend a 30mm gap, minimum at the top of the door.

#### FIXING

- **Fastening screws supplied.**
- Pop rivets are not recommended.

#### FINISH

- Satin Natural Anodised only.

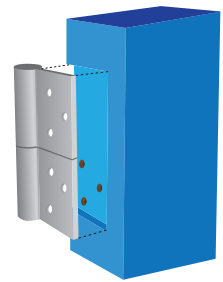


**Code No. A 103**

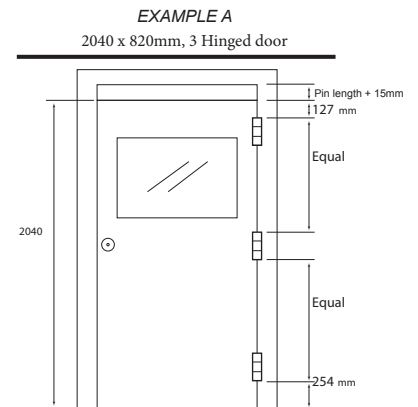
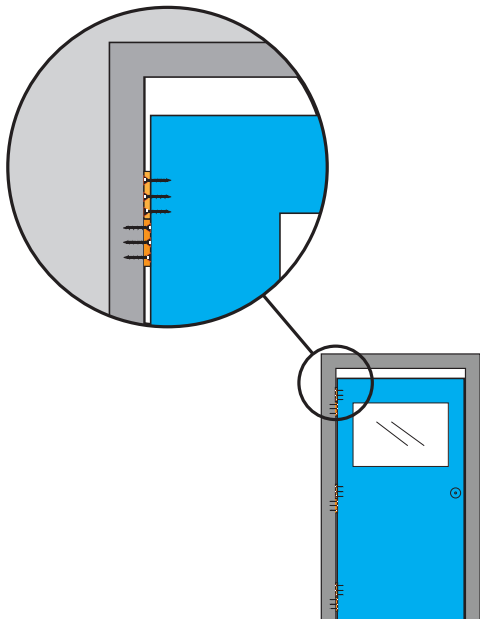
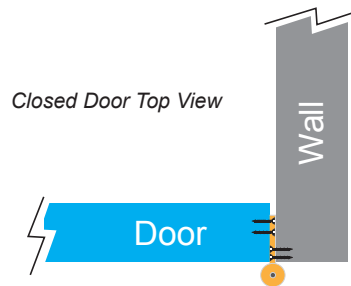
## LIFT-OFF HINGE INFORMATION

**Standard Application:**

- The top of the door should sit at a distance of the hinge pin plus 3mm from the frame.
- The top hinge is 127mm down from the frame mark to top of the hinge.
- Bottom hinge 254mm from bottom edge of barrel to finished floor.
- The third hinge is centered between the top and bottom hinges (if more than three hinges used, hinge spacings are equal between all hinges from the top to the bottom hinges). See Example Door A.
- Hinge is to be mounted directly onto the door and frame as it is a surface mount application. There will be a gap between the frame and the door edge equal to the thickness of the hinge leaf. This will also be equal to the gap above the door.
- Space out and mark all holes for pre-drilling before attaching the hinges to the frame.
- Please note if the hinge is 'Offset' - where the barrel sits to one side of the hinge leaf. This will result in misalignments when hanging.



*Recess, Pre-drill and Mount*



<b>Number of Hinges Required per Door Size</b>	
	820 - 900 mm (W)
2100 mm (H)	3
2300 mm (H)	4
*All information is regarded as generic unless specified in writing by us. Contact us for custom sizes and further information.	